

Model	OZP-170-12/15	Setting: 12V Output Settings
Item	Ambient Temperature Drift	

1. Test Conditions (試験条件)

Input Voltage: 100V AC

(入力電圧: AC 100V)

Load Factor: 40%, 60%, 64.7%, 80%, 82.4%, 100%

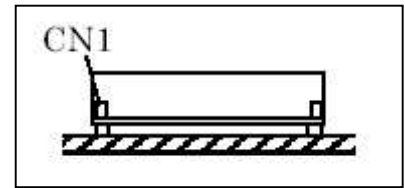
(負荷率: 40%, 60%, 64.7%, 80%, 82.4%, 100%)

This test is measured with PCB type (Without chassis and cover)

(この試験は基板タイプで測定(シャーシ・カバーなし))

Ambient temperature measuring point: Measured point, Shall be 10cm away from the power supply (Except top side)

(周囲温度測定ポイント: 電源から、上方以外に10cm離れた地点)

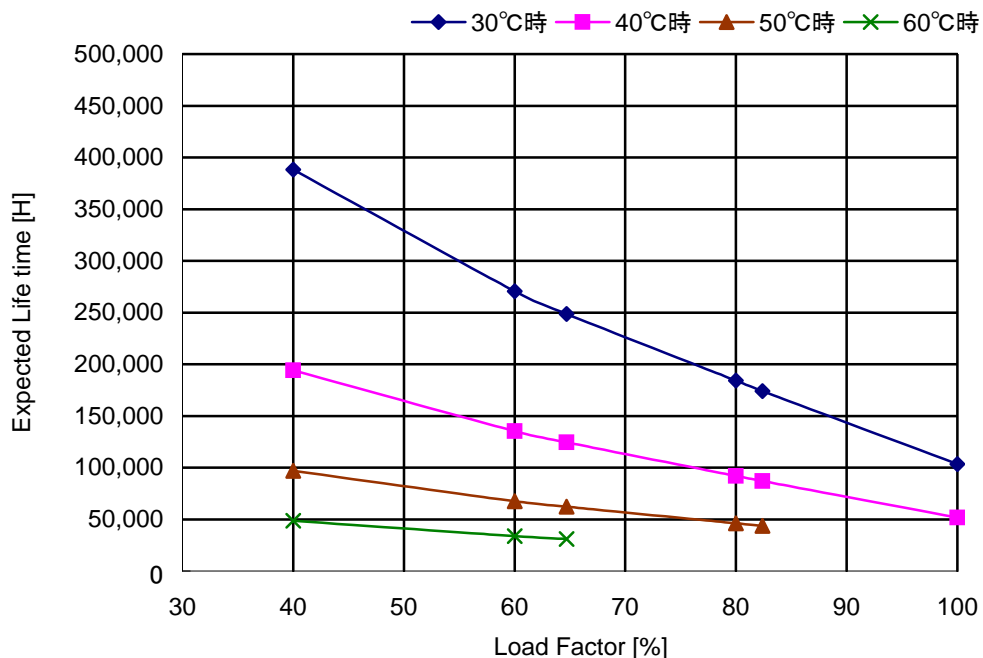


Installation Direction: A

(取付方向: A)

2. Test Results (試験結果)

Load Factor [%]	Load Power [W]	Estimated Life Time [H] (推定寿命時間)			
		30°C	40°C	50°C	60°C
40.0	67.2	388,117	194,059	97,029	48,515
60.0	100.8	270,455	135,227	67,614	33,807
64.7	110.0	248,705	124,450	62,200	30,900
80.0	134.4	184,152	92,076	46,038	-
82.4	140.1	174,050	87,030	43,511	-
100.0	168.0	103,404	51,702	-	-



Over the area of 15 years, the degradation of sealing rubber, etc., is not included in the calculation
(15年以上では、封口ゴムの劣化の影響は、計算式には含まれていません)

The estimated life time, we want to consider the ripple current
(推定寿命時間は、リップル電流を考慮して求めております)