

Model	OZ-15-15
Item	Ambient Temperature Drift

### 1. Test Conditions (試験条件)

Input Voltage: 100V AC

(入力電圧: AC 100V)

Load Factor: 40%, 60%, 80%, 100%

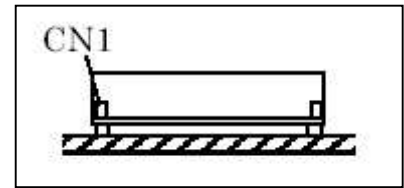
(負荷率: 40%, 60%, 80%, 100%)

This test is measured with PCB type (Without chassis and cover)

(この試験は基板タイプで測定(シャーシ・カバーなし))

Ambient temperature measuring point: Measured point, Shall be 10cm away from the power supply (Except top side)

(周囲温度測定ポイント: 電源から、上方以外に10cm離れた地点)

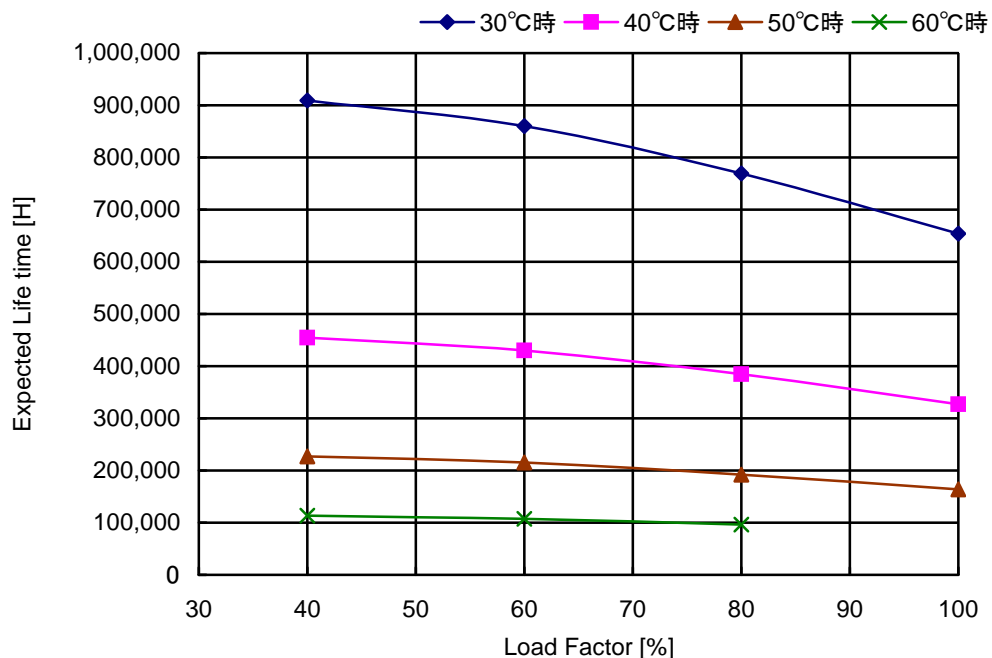


Installation Direction: A

(取付方向: A)

### 2. Test Results (試験結果)

Load Factor [%]	Load Power [W]	Estimated Life Time [H] (推定寿命時間)			
		30°C	40°C	50°C	60°C
40.0	6.0	908,921	454,460	227,230	113,615
60.0	9.0	860,167	430,083	215,042	107,521
80.0	12.0	769,079	384,539	192,270	96,135
100.0	15.0	654,059	327,030	163,515	-



Over the area of 15 years, the degradation of sealing rubber, etc., is not included in the calculation  
(15年以上では、封口ゴムの劣化の影響は、計算式には含まれていません)

The estimated life time, we want to consider the ripple current  
(推定寿命時間は、リップル電流を考慮して求めています)