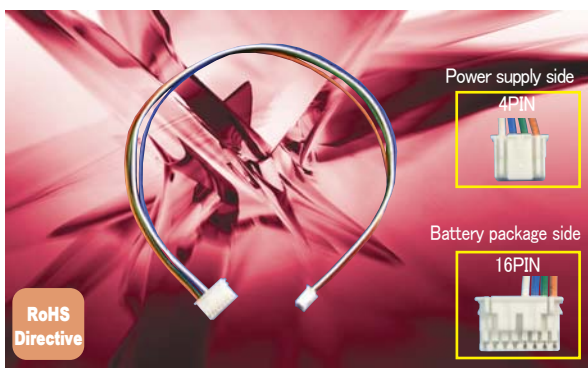
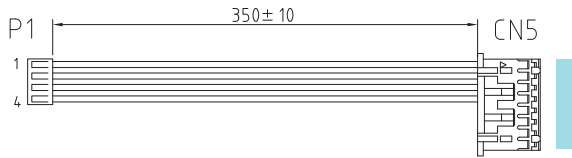


Battery Package Connection Harness WH-16PAD04XA-350



Outline Drawing



Product Specification

Items	Specification	Measurement conditions
Environment Other	Operating temp.	-10~70°C
	Storage temp.	-25~70°C
	Relative humidity	10~95%
Warranty	One year after delivery. If any faults belong to us, the defective unit shall be repaired or replaced at our cost.	It shall be used under normal temperature, humidity, and rating.

Model	Stock	Standard Price (Before Tax)
WH-16PAD04XA-350	Standard stock	¥290

Model Name Coding

WH-16PAD04XA-350

① Wire harness
② 16-pin PAD connector of battery package side
③ 4-pin XA connector of power supply side
④ Harness length (mm)

● Signal harness for 24V output type OZP/GPSA series (battery backup is possible) to connect with a battery package and conduct charge/discharge control.

Compatible Power Supply

Model	Page	Model	Page
OZP-120 series	C-E86	GPSA-360-24-TP	C-E122
OZP-170 series	C-E104	GPSA-750-24-TP	C-E136

※It can be connected to OZP series 24V output (with battery backup) type.

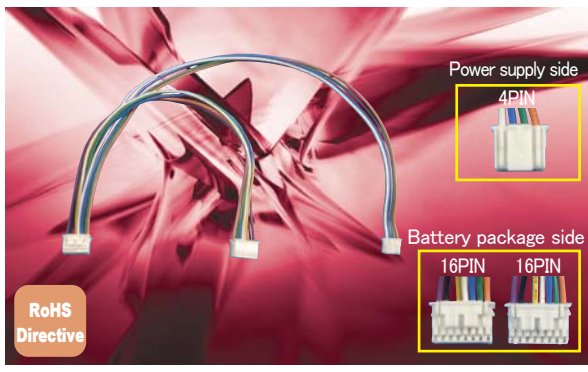
Compatible Battery Package

Model	Page
BS14A-H24/2.5L	C-H2

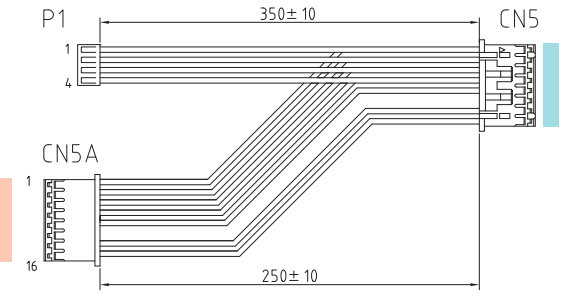
Pin Assignment

CONNECTOR TYPE	PIN No.	PIN No.	FUNCTION	WIRE COLOR	WIRE TYPE	CONNECTOR TYPE
P1 (power supply side)			CN5 (battery package side)			
Housing: XAP-04V-1(JST) or equivalent Terminal: SXA-001T-P0.6(JST) or equivalent.	1	1	VB	ORANGE	UL1007 AWG#22	Housing: PADP-16V-1-S(JST) or equivalent Terminal: SPH-001T-P0.5L(JST) or equivalent
	2	3	ON/OFF	GREEN		
	3	5	AC FAIL	BLUE		
	4	7	BATT LOW	WHITE		
	-	2	N.C.			
	-	4	N.C.			
	-	6	N.C.			
	-	8	N.C.			
	-	9	N.C.			
	-	10	N.C.			
	-	11	N.C.			
	-	12	N.C.			
	-	13	N.C.			
	-	14	N.C.			
	-	15	N.C.			
	-	16	N.C.			

Battery Package Connection Harness WH-16PAD04XA-350-01



Outline Drawing



Product Specification

Items	Specification	Measurement conditions
Environment Other	Operating temp.	-10 to 70°C
	Storage temp.	-25 to 70°C
	Relative humidity	10 to 95%
Warranty	One year after delivery. If any faults belong to us, the defective unit shall be repaired or replaced at our cost.	It shall be used under normal temperature, humidity, and rating.

Model	Stock	Standard Price (Before Tax)
WH-16PAD04XA-350-01	Standard stock	¥450

Model Name Coding

WH-16PAD04XA-350-01

① Wire harness
② 16-pin PAD connector of battery package side
③ 4-pin XA connector of power supply side
④ Harness length (mm)
⑤ Branch number

● Signal harness for 24V output type OZP/GPSA series (battery backup is possible) to connect with a battery package and conduct charge/discharge control

● The harness is used to connect two battery packages.

Compliant Power Supply

Model	Page	Model	Page
OZP-120 series	C-E86	GPSA-360-24-TP	C-E122
OZP-170 series	C-E104	GPSA-750-24-TP	C-E136

※It can be connected to OZP series 24V output (with battery backup) type.

Compatible Battery Package

Model	Page
BS14A-H24/2.5L	C-H2

Pin Assignment

CONNECTOR TYPE	PIN No.	PIN No.	FUNCTION	WIRE COLOR	WIRE TYPE	CONNECTOR TYPE	
P1 (power supply side)			CN5 (battery package side)				
Housing: XAP-04V-1(JST) or equivalent Terminal: SXA-001T-P0.6(JST) or equivalent.	1	1	VB	ORANGE	UL1007 AWG#22	Housing: PADP-16V-1-S(JST) or equivalent Terminal: SPH-001T-P0.5L(JST) or equivalent	
	2	3	ON/OFF	GREEN			
	3	5	AC FAIL	BLUE			
	4	7	BATT LOW	WHITE			
CN5A (battery package side)							
	1	2	VB	ORANGE			
	3	4	ON/OFF	GREEN			
	5	6	AC FAIL	BLUE			
	7	8	BATT LOW	WHITE			
	9	10	C SENSE	YELLOW			
	13	14	V SENSE	BLACK			
	15	16	SHUT DOWN	VIOLET			
	11	11	N.C.				
	12	12	N.C.				
	1	9	N.C.				
	2	13	N.C.				
	4	15	N.C.				
	6	-					
	8	-					
	10	-					
	14	-					
	16	-					