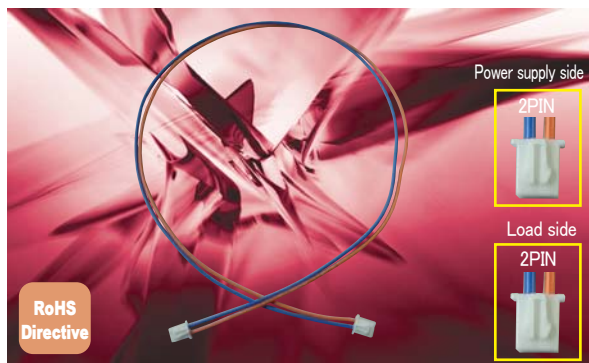
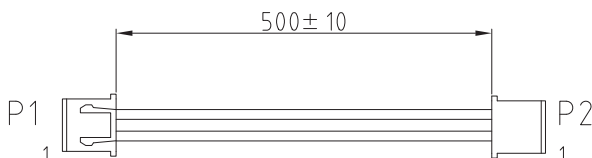


# Signal Harness WH-02XH02XH-500



## Dimension



## Specification

Item	Specification	Measuring condition
Environmental Specification	Operating temperature	-10~70°C
	Storage temperature	-25~70°C
	Relative temperature	10~95%
Others	Free repair period: Free repair for one year from the date of purchase, and only if Nipron are responsible for the defective unit.	There shall use under the condition of normal temperature, humidity, and rating.

Model	Stock	Standard Price (Before Tax)
WH-02XH02XH-500	Standard stock	¥200

**Model Name Coding**  
**WH - 02XH 02XH - 500**  
 ① ② ③ ④

● Signal harness for output ON/OFF control signal (RC signal) of OZP series.

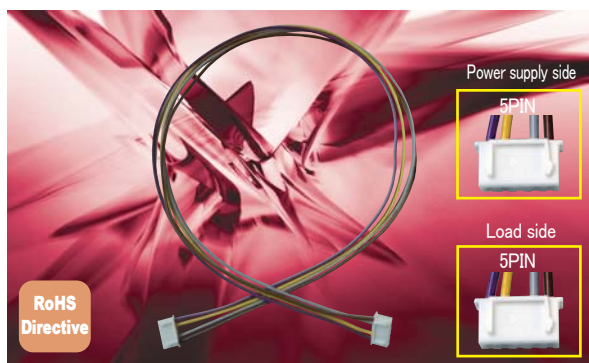
## Applicable power supply

Model	Page	Model	Page
OZP-120 Series	C-E86	OZP-170 Series	C-E104

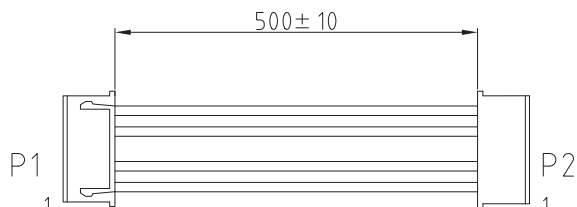
## Pin assignment

CN NAME	CONNECTOR TYPE	PIN No.	FUNCTION	WIRE COLOR	WIRE TYPE
P1 P2	Housing: XHP-2(JST) or equivalent Terminal: SXH-001T-P0.6(JST) or equivalent	1	RC+	BLACK	UL1007 AWG#22
		2	RC-	BLACK	

# Signal Harness WH-05XH05XH-500



## Dimension



## Specification

Item	Specification	Measuring condition
Environmental Specification	Operating temperature	-10~70°C
	Storage temperature	-25~70°C
	Relative temperature	10~95%
Others	Free repair period: Free repair for one year from the date of purchase, and only if Nipron are responsible for the defective unit.	There shall use under the condition of normal temperature, humidity, and rating.

Model	Stock	Standard Price (Before Tax)
WH-05XH05XH-500	Standard stock	¥380

**Model Name Coding**  
**WH - 05XH 05XH - 500**  
 ① ② ③ ④

● Signal harness for blackout detection signal (AC FAIL), and battery low signal (BATT LOW) of OZP series.

※ Battery low signal output only with battery pack

## Applicable power supply

Model	Page	Model	Page
OZP-120 Series	C-E86	OZP-170 Series	C-E104

## Pin assign

CN NAME	CONNECTOR TYPE	PIN No.	FUNCTION	WIRE COLOR	WIRE TYPE
P1 P2	Housing: XHP-5(JST) or equivalent Terminal: SXH-001T-P0.6(JST) or equivalent	1	BATT_LOW+	BROWN	UL1007 AWG#22
		2	BATT_LOW-	GRAY	
		3		N.C.	
		4	AC_FAIL+	YELLOW	UL1007 AWG#22
		5	AC_FAIL-	VIOLET	

A. UPDATE

B.-A. SELECTION GUIDE

B.-B. PRODUCT PAGE GUIDELINE

B.-C. NONSTOP POWER SUPPLY

B.-D. AC+DC DUAL-INPUT PSU

B.-E. GENERAL PURPOSE PC PSU

B.-F. GENERAL PURPOSE REDUNDANT PSU

B.-G. OPTIONS

C.-A. SELECTION GUIDE

C.-B. PRODUCT PAGE GUIDELINE

C.-C. AC/DC SINGLE OUTPUT NONSTOP PSU

C.-D. AC/DC MULTI-OUTPUT NONSTOP PSU

C.-E. AC/DC SINGLE OUTPUT POWER SUPPLY

C.-F. AC/DC MULTI-OUTPUT POWER SUPPLY

C.-G. DC-DC CONVERTER

C.-H. OPTIONS

D. TECHNICAL DICTIONARY

E. COMPANY PROFILE

F. BUSINESS MANUAL

G. INDEX