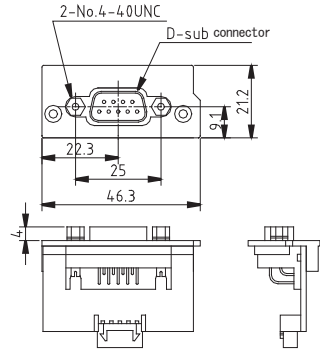


# Signal Unit SU-RS



RoHS Directive

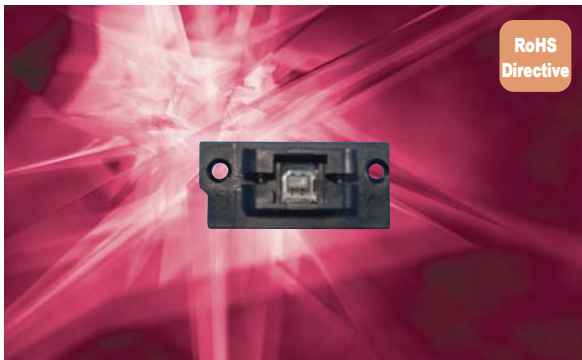
### Outline Drawing



### Pinout Assignment

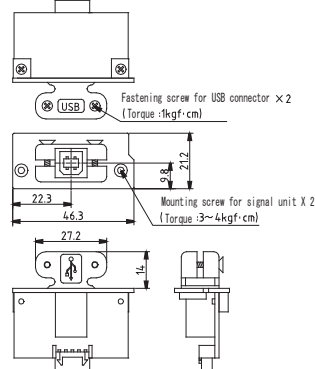
PIN No.	FUNCTION	PIN No.	FUNCTION	CONNECTOR TYPE
1	BATT LOW	6	N.C.	JEY-9P-1A3A(JST) or equivalent
2	N.C.	7	N.C.	
3	N.C.	8	AC FAIL	
4	SHUT DOWN	9	N.C.	
5	N.C.			

# Signal Unit SU-US2



RoHS Directive

### Outline Drawing



### Pinout Assignment

PIN No.	FUNCTION	USB TYPE
1	VBUS	USB B TYPE CONNECTOR
2	D+	
3	D-	
4	COM	

Model	Stock	Standard Price (Before Tax)
SU-RS	Standard stock	¥1,000

Model Name Coding

SU - RS	① Series name
	② Dedicated to RS232C

### Features

- By mounting SU-RS, automatic shutdown becomes available with RS232C.

### Compatible Power Supply

Desktop PC Power Supply			
Model	Page	Model	Page
eNSP3-450P series	B-C2	eNSP-300P series	B-C22
eNSP4-500P series	B-C12		

### Product Specification

Items	Specification	Measurement condition
Operating temp/humidity	0 to 50°C/10 to 90%	No condensation
Storage temp/humidity	-25 to 70°C/10 to 95%	No condensation
Vibration	Displacement amplitude of 0.15mm, vibration frequency of 10-55Hz for 10 sweep cycles in the X-Y-Z directions for 45 minutes each.	JIS-C-0040-1995
Mechanical shock	Acceleration of 150m/s <sup>2</sup> for 11ms one time each in the X-Y-Z directions. No malfunction, damage, loosening, or coming-off.	JIS-C-0041-1995
Reliability grade	FA (Industrial equipment grade to use double-sided PCBs with through holes)	
Warranty	Three years after delivery. If any faults belong to us, the defective unit shall be repaired or replaced at our cost.	

### Signal Input/Output Specification

Items	Specification	Note
Input signal	Battery shutdown signal for RS232C (SHUT DOWN_R)	Battery connection is shut off at 'positive (+2.4V min)' input (15ms min input) (only available at battery backup operation)
Output signal	Blackout detection signal for RS232C (AC FAIL_R)	'Negative (-9V typical)' signal is delivered at low AC input voltage and blackout detection (voltage decrease of AC input capacitor of the power supply body is detected). Detection delay time depends on the size of output power and between 20 to 500ms after AC failure)
Output signal	Low battery voltage signal for RS232C (BATT LOW_R)	'Negative (-9V typical)' is delivered when the battery terminal voltage decreases to 20V typical (when the battery package is not connected to nonstop unit, 'positive (+9V typical)' is delivered)

Model	Stock	Standard Price (Before Tax)
SU-US2	Standard stock	¥2,350

Model Name Coding

SU - US2	① Series name
	② Dedicated to USB

### Feature

- By mounting SU-US2, automatic shutdown becomes possible with USB.

### Compatible Power Supply

Desktop PC power supply			
Model	Page	Model	Page
eNSP3-450P series	B-C2	eNSP-300P series	B-C22
eNSP4-500P series	B-C12		

### Product Specification

Items	Specification	Measurement condition
Input	Rated input voltage (VBUS)	DC5V (Input voltage range: DC4.0 to 5.25V)
Environment	Operating temp/humidity	0 to 60°C/10 to 90%
Environment	Storage temp/humidity	-25 to 70°C/10 to 95%
Environment	Vibration	Displacement amplitude of 0.15mm, vibration frequency of 10-55Hz for 10 sweep cycles in the X-Y-Z directions for 45 minutes each.
Other	Mechanical shock	Acceleration of 150m/s <sup>2</sup> for 11ms one time each in the X-Y-Z directions. No malfunction, damage, loosening, or coming-off.
Other	Reliability grade	FA (Industrial equipment grade to use double-side PWBs with through holes)
Other	Warranty	Three years after delivery. If any faults belong to us, the defective unit shall be repaired or replaced at our cost.
Other	Compliant OS	Windows98SE/2000/XP/Vista

### Signal Input/Output Specification

Items	Specification
Output Signal	Blackout detection signal for USB (AC FAIL_U)
Output Signal	Low battery voltage signal for USB (BATT LOW_U)

CTS signal 'negative (-9V typical)' of RS232C or equivalent USB data signal is delivered at low AC input voltage or blackout detection (the value at low AC input/blackout detection and the signal output timing follow the specification of nonstop power supply)

When the battery terminal voltage decreases, CTS signal 'negative (-9V typical)' of RS232C or equivalent USB data signal is delivered (the value at voltage decrease of battery terminal and signal output timing shall follow the specification of nonstop power supply).