

# Battery Package BS04A-NC24 / 0.7

## Battery Dedicated to NSP7 Nonstop Power Supply

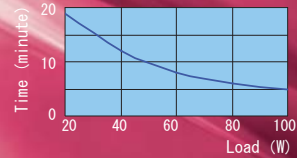
Lead Ni-Cd Ni-MH Other

RoHS Directive



BS04A-NC24 / 0.7

Battery backup discharge characteristics※



Model	Description	Stock	Standard Price (before tax)
BS04A-NC24 / 0.7		Standard stock	¥13,160

■ Model Name Coding

**BS04 A - NC 24 / 0.7**

① Series name      ④ Output voltage (DC24V type)  
 ② Modification number      ⑤ Rated capacity  
 ③ Ni-Cd

### Compatible Power Supply

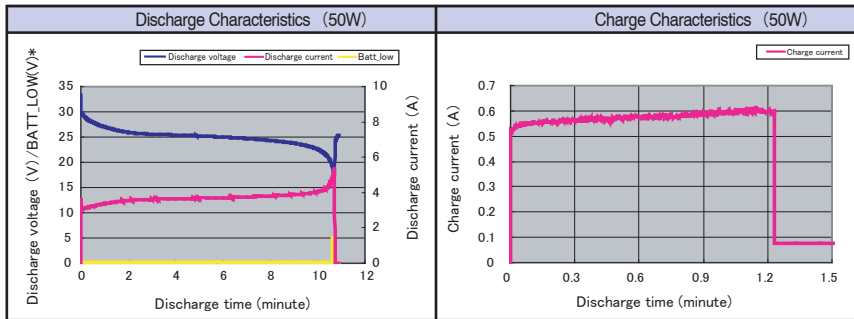
Desktop PC power supply	
NSP7-100 series	B-C112

### Features

- Ni-Cd battery is the most resistant battery to over-discharge. It is suitable for UPS
- Small Ni-Cd battery dedicated to NSP7 series

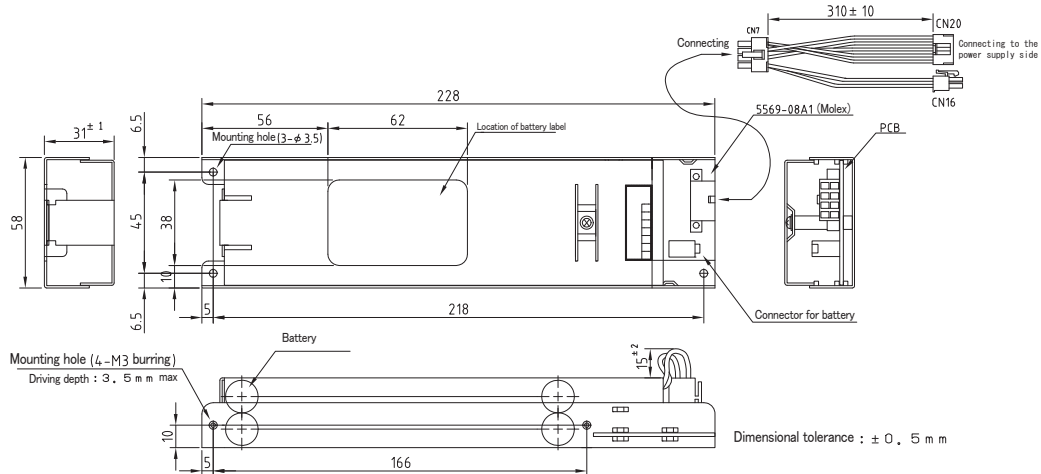
### Battery Charge/Discharge Characteristics ※ (used with NSP7-100-X2S)

(Examples of actual measurement)



\*Low battery voltage signal (open collector output signal from the power supply)

### Outline Drawing



### Product Specification (Items are provided at normal temperature and humidity unless otherwise specified.)

Items	Specification	Measurement condition, etc.
Battery	1.2V 700mAh × 22 connected in serial	Sealed Ni-MH battery
Nominal battery voltage	DC26.4V	
Rated capacity	700mAh	
Embedded fuse rating	20A 32V	Do not replace fuse.
Operating temperature/humidity	0 to 45°C/10 to 90%	There shall be no condensation.
Storage temperature/humidity	-30 to 50°C/10 to 90%	There shall be no condensation.
Weight	1.2 kg or less	
Life expectancy*	Approx. 3 to 4 yrs. (1 time/day discharge)	Environmental temperature: 25°C, 100W 3-minute discharge at a time
Warranty	One year after delivery. If any faults belong to us, the defective unit shall be repaired or replaced at our cost except for malfunction caused by over-discharge.	Except for errors not listed in the specification.

\*Life expectancy is a reference value. It is not a guaranteed value.

※ Be aware that it is a reference value at initial use of the battery package; it is not a guaranteed value.

Computer Power Supply - BRAIN

Control & Mechanism System Power Supply - LIMBS

- A. UPDATE
- B.-A. SELECTION GUIDE
- B.-B. PRODUCT PAGE GUIDELINE
- B.-C. NONSTOP POWER SUPPLY
- B.-D. AC+DC DUAL-INPUT PSU
- B.-E. GENERAL PURPOSE PC PSU
- B.-F. GENERAL PURPOSE REDUNDANT PSU
- B.-G. OPTIONS
- C.-A. SELECTION GUIDE
- C.-B. PRODUCT PAGE GUIDELINE
- C.-C. AC-DC SINGLE OUTPUT NONSTOP PSU
- C.-D. AC-DC MULTI-OUTPUT NONSTOP PSU
- C.-E. AC-DC SINGLE OUTPUT POWER SUPPLY
- C.-F. AC-DC MULTI-OUTPUT POWER SUPPLY
- C.-G. DC-DC CONVERTER
- C.-H. OPTIONS
- D. TECHNICAL DICTIONARY
- E. COMPANY PROFILE
- F. BUSINESS MANUAL
- G. INDEX