



# Company Profile

Nipron Co., Ltd.

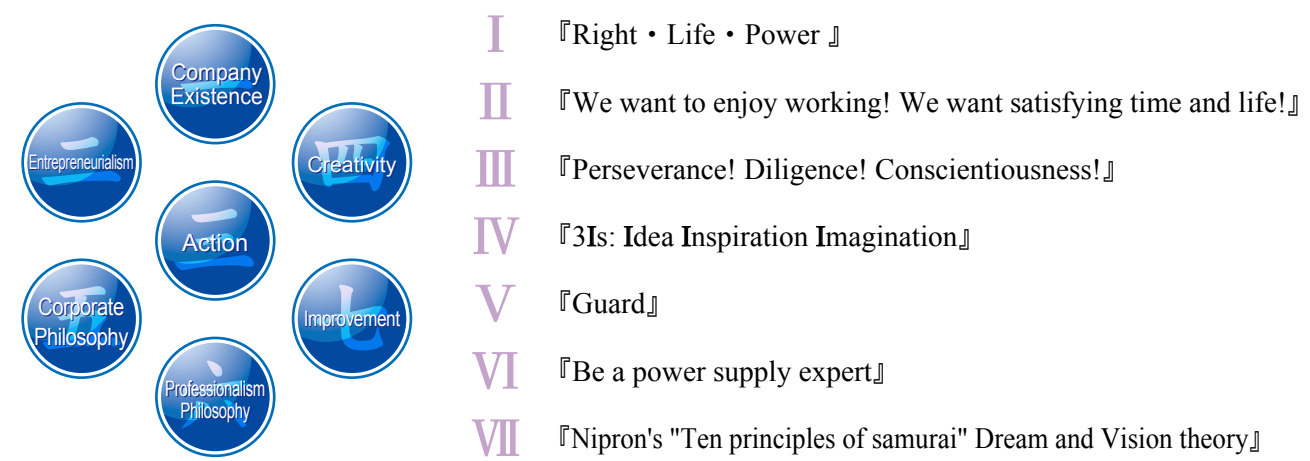
Development, manufacturing,  
and sales of Switch-mode Power Supplies  
and Nonstop DC Power Supplies



# Nipron Fundamental Thoughts

Nipron sticks to the principle "Guard" as our core concept.  
We consider that Power Supply plays the same role as a human's heart,  
and must not break down faster than any other devices under any circumstances.  
Based on this policy,  
"Power Supply (heart) must never break down" and  
"PSU must keep providing and supplying pure current (blood) to the devices(body)  
by the operation until the end of life of equipment".  
Nipron continuously develops our products in quality and designing as "Safe and Secured Power Supply Manufacturer."

## Our 7 missions



**I . Corporate Existence**  
Nipron would like to maintain our company as a socially valuable company for years to come. Therefore, we need to understand our "corporate durability concept" , 正(right)•命(life)•力(power) deeply and hold them for good. We always must have righteousness and be willing to strive to generate new life (human resource, technologies, products and market).

**II . Entrepreneurialism**  
"Make our life fruitful."  
Nipron founded with the idea "We want to enjoy working! We want to be satisfied with our time and life!" and to this day. "Make our work enjoyed and interested" here, means that we need to experience of "interesting work" as not to wait but to create by ourselves and we should extend this experience as Nipron's culture.

**III . Action**  
**IV . Creativity**  
The nature is hard and continuously gives us a trials. However, these trials are necessary for humans and natural order. In order to survive in the hard economical environment, we have to have outstanding abilities which meet the market needs of the times and keep winning. These abilities can be acquired by the action concept, "Perseverance (neba), Diligence (mame), Conscientiousness (kichi)". In addition, the creativity concept, "Idea, Inspiration, Imagination" will be inspired and lead the new technologies and new products base on this concept. This advantage shall be enhanced the brand strength and gaining the right profits. We believe ourselves that our profits should be contributed to our society with developing new products.

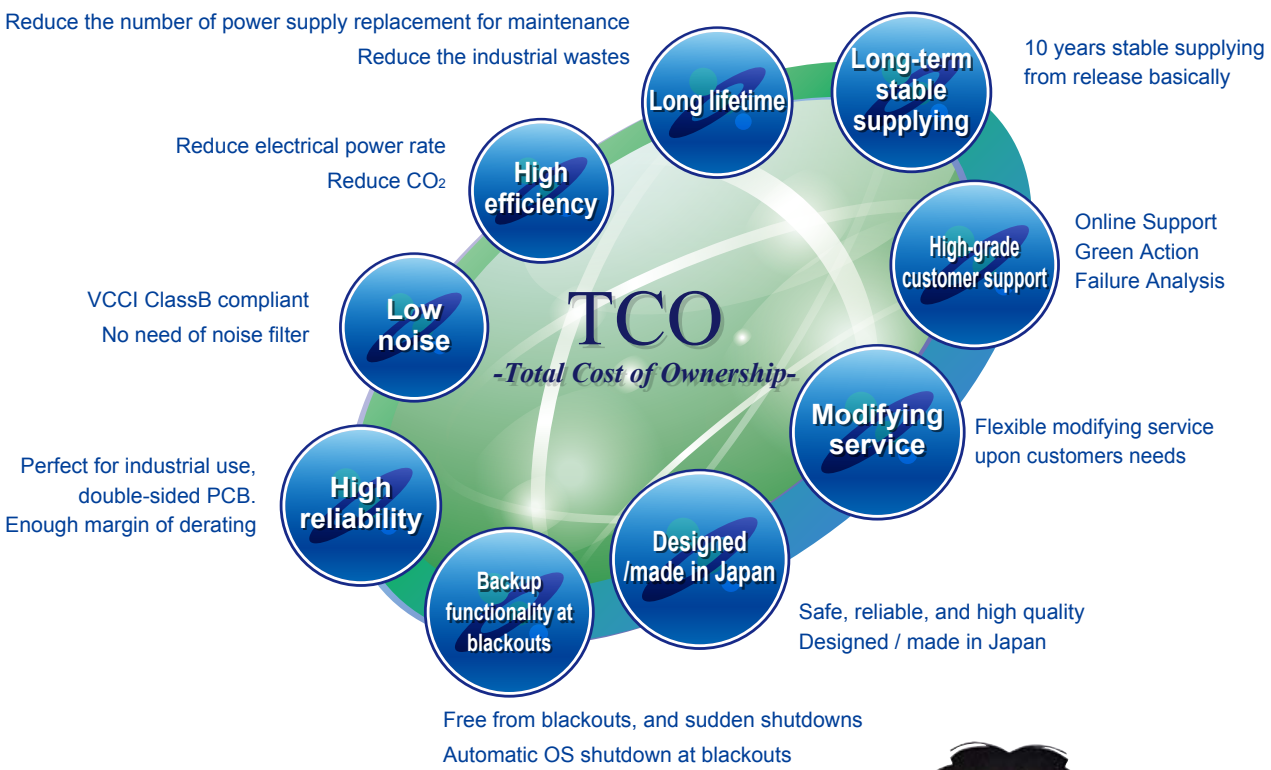
**V . Corporate Philosophy**  
We have to persist our business concept "Guard" and pass on our trust and confidence to our next generation which we have gained through our long experiences. If we challenge a new project, all employees need to be together and must view the future without having short-sighted thinking, and make a balance between the dream and reality.

**VI . Professionalism Philosophy**  
People at Nipron never forget the concept of "manufacturing the products" and "thrive on being an expert", which concepts enriches our life beautifully throughout our life for long.

**VII . Improvement**  
With Nipron's "Ten principles of Samurai", dream and vision of our theory gives us missions and we should study and make an effort to have most advanced skills that are needed for any times.

# TCO and Product Design

Nipron designs high-value-added / service added products based on considering "Total Cost of Ownership (TCO)".  
TCO defines the whole definition of the expenses for the project which includes all the ones;  
initial cost, running cost, and maintenance cost with all the support and service for the final ones who bears these cost on.  
Therefore, Nipron products are available for not only device makers/integrators but also for end/final users  
who should take advantages by selecting Nipron products because our design concept always considers of "TCO".



Nipron Character  
"Gen-san"



"Gen-san" is an evolved gorilla not only strong but also intelligent. Represents Nipron's ideal product philosophy "Powerful and tough" which comes from high reliability. You can find Gen-san in our web site and catalogs!



# PRODUCT INTRODUCTION

# We call PSUs for PCs "Brain Power Supply"

## Power Supply for Desktop PCs



"Nonstop PSU" -Nipron's own UPS functionality equipped PSU- and variety of PSUs. From brand new big capacity EPS PSUs to AT PSUs.



Large-capacity and high-efficiency Nonstop ATX / EPS power supply



Large-capacity and high-efficiency ATX / EPS power supply



Medical standard approved Nonstop ATX power supply and dedicated battery package



Medical standard approved ATX power supply

## Rack Mount Power Supplies



"Primary side redundant PSU" -Nipron's own design redundant PSU- and variety of PSUs for servers. Of course high efficiency and high reliable!



High Efficiency and low standby power consumption, 1U size power supply



More than 30,000 units sales record, 12V dual output power supply



Long-selling 1U size power supply



Flex ATX, small 1U size power supply



'MINAMOTTO-SAN' series a complete set with accessories



More than 60,000 units sales record, high reliability ATX power supply



More than 210,000 units sales record, high reliability ATX power supply



More than 30,000 units sales record, high reliability Nonstop ATX power supply



High efficiency and low standby power consumption, fanless 1U size power supply



More than 70,000 units sales record, high reliability 1U/2U power supply



High reliability 2U power supply



High efficiency and low standby power consumption SFX size power supply



Nonstop SFX size power supply



12V dual output SFX size power supply



More than 300,000 units sales record, high reliability ATX power supply



Primary redundant power supply 330W-1000W



Full redundant power supply



Nonstop AT power supply



Long-selling AT power supply



Ni-MH battery package dedicated to Nonstop power supply



Software for Intelligence Battery Package dedicated to Nonstop power supply



Fanless ATX power supply and dedicated battery package



Nonstop power supply for Compact PCI

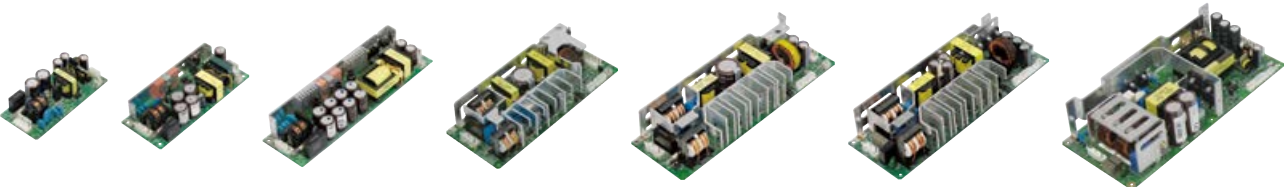


Nonstop power supply for VMEbus



AC-DC Converter

Perfect for control / power source!  
High peak, high efficiency, and low noise  
universal PSUs and unit type PSUs.



Open frame single output power supply 15-350W (Medical Standard APPROVED models also available)



Open frame multi-output power supply

Unit type single output power supply 360-1500W  
(Medical Standard APPROVED models also available)

Unit type multi-output power supply



Nonstop ATX power supply with 24V output

Nonstop ATX power supply with 24V output  
& large capacity lead-acid battery package

Battery built-in,  
box-shaped single output power supply

DC-DC Converter



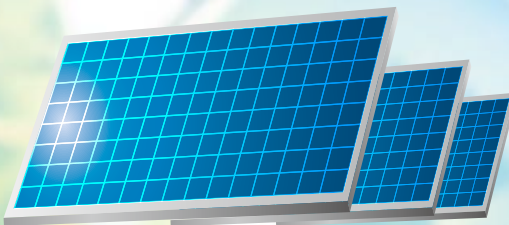
Insulated type DC input ATX power supply

Non-Insulated type DC input ATX power supply

Insulated type Gate Drive  
power supply module

Green Power PSU

With "Eco-Friendly" thoughts, Nipron develops  
"Next generation Green Power PSUs"  
which maximally utilize natural sourced energies.



Green Best Mix power supply

String Converter

With MPPT control Non-insulated type  
electrolytic capacitors less & fan less DC - DC booster



For HVDC, Non-insulated type  
AC - DC rectifier

Insulated type  
stepping-up/-down two-way converter

MPPT control circuit embedded,  
Insulated type PV Charger



Non Insulated type booster

Non Insulated type  
stepping-up/-down two-way digital converter



# Core Competence Create Innovations

In order to guard IT, industrial society and global environment we keep developing innovative, highly reliable PSUs based on "Nonstop PSU"  
-Nipron's own UPS function equipped PSU- developing idea.

## 3I [Idea Inspiration Imagination] (Creation concept)

3Is become the Core Competence to generate Nipron's new wave (New business, New technology and New strategy).

- 3
- Idea

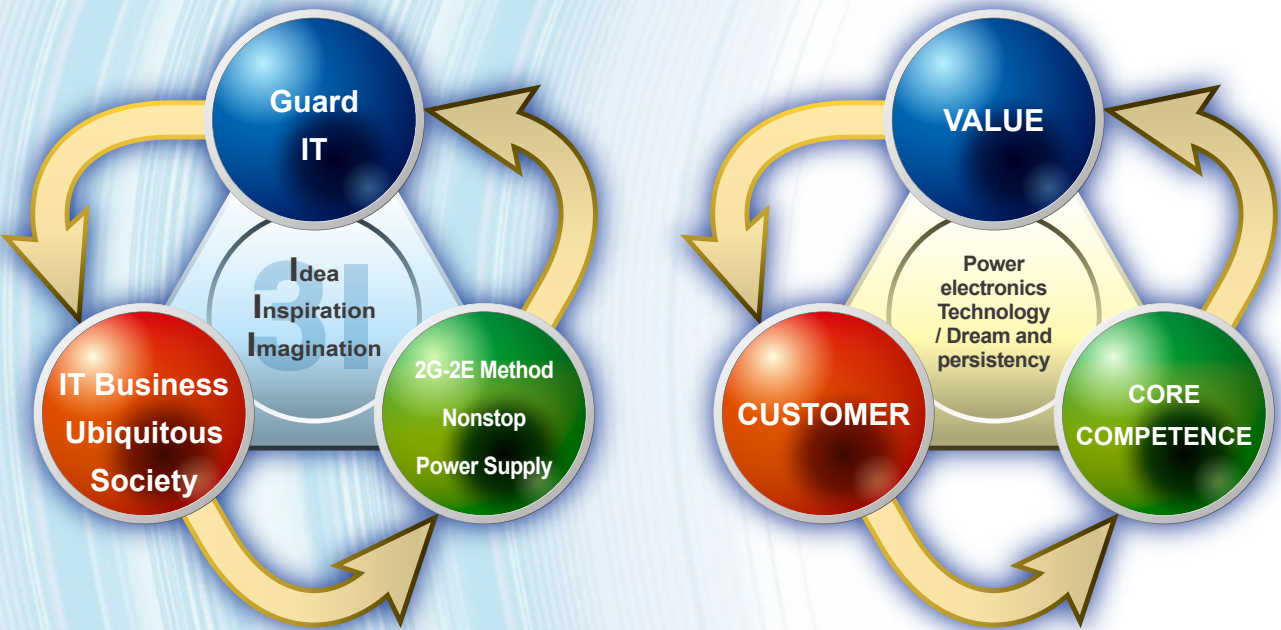
Inspiration

Imagination
- ...

Mind full of originality to create things
- ...

Spiritual conception brought by strongly trained spirit
- ...

Imaginative power conceived by Great Ambition



### Guard IT

If the PSU stops working, no machines can work even it is the most advanced machine.  
Furthermore, all data or important information will be lost if it happens during machine operation.  
We focus on that point and have "Guard IT" as our fundamental thoughts and keep developing highly reliable PSUs such as "Nonstop PSU" with 2Gate-2Engine circuit.

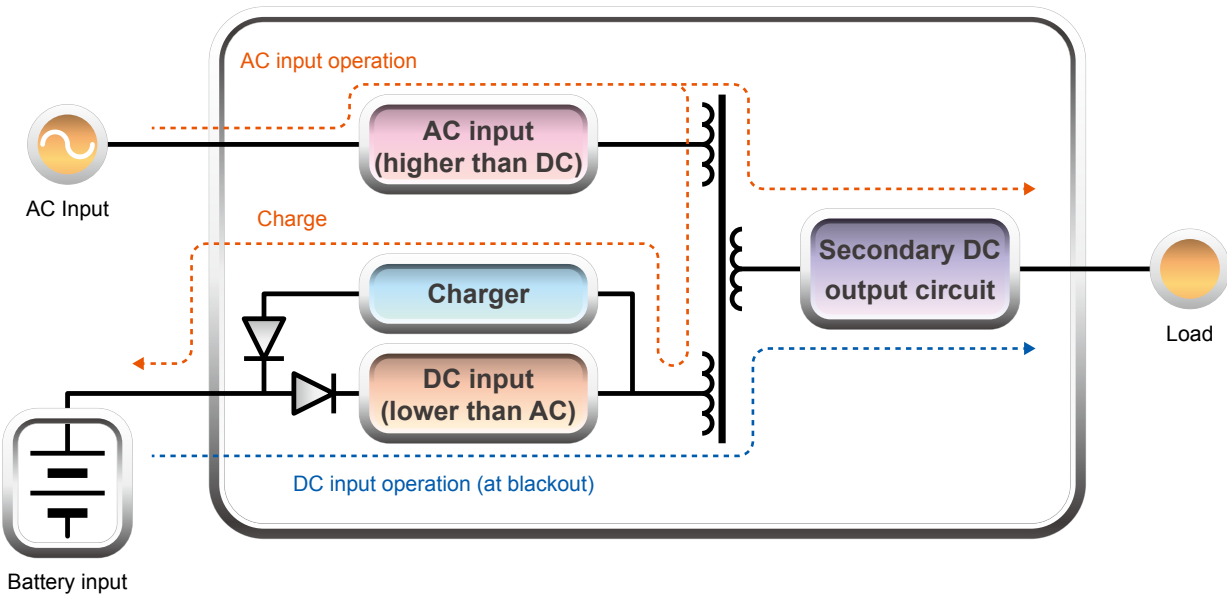
2 Gate-2 Engine circuit method "Nonstop PSU"  
eNSP3-450P series



### "Nonstop PSU" our core competence

Nipron's patent, 2Gate - 2Engine circuit (Nonstop PSU) has two inputs and two converters (AC and battery) and that are completely insulated. Both AC and battery input to one high frequency transformer simultaneously.  
Normally AC supplies the power but, when AC input voltage drops or stops (blackout), the battery provides the insufficient power. Therefore secondary side can output power without stop so that computer system is safe and can operate continuously.

2 Gate-2 Engine circuit method "Nonstop PSU"



### Guard Global Environment

- Provide power supplies which comply with RoHS directive for lead-free environment.
- Develop energy-saving power supplies with 80% or higher efficiency, resulting in reducing power loss and the prevention of global warming.
- Reduce CO2 and industrial wastes with the life expectancy of 10 years or longer design.



**Nipron**  
Guard Global Environment



# Provide you significant value-added products

"What is perfect PSU fulfilling customers' requests and requirements?"

What we have to do is that the planning and designing the product

based on our customer's needs and making our customers satisfied

with high value-added we could provide, not making them satisfied simply with product only.

## Marketing on Needs and Trends

Before product planning, we conduct a market research from various points of view and figure out what product can fit into customers' current and near future demands.

### Business Talk Information Control

We keep and administrate the business talks with customers for product planning.

### Technical Meetings

We invite our customers to our office actively to exchange opinions on technical issues with our engineers. It is to reflect their voice on our new products.



### Exhibitions

To introduce our new products and exchange information from customers who we can rarely meet through our usual sales activities.

### Major Exhibitions we attend

Smart Grid Expo (Tokyo Big Sight)  
ESEC: Embedded Systems Expo & Conference (Tokyo Big Sight)  
Techno Frontier -Power System Japan (Tokyo Big Sight)  
Smart Community Expo OSAKA  
International Robot Exhibition (Tokyo Big Sight)  
Electronica (Munich, Germany)



## Market Needs and Product Planning

To provide the product planning along with customer's requests and requirements by gathering information from the meeting we had before and the exhibition we participated before.



### Products developed from customers voice



### mNSP-450P series

Top selling product, Nonstop ATX PSU "eNSP-450P" series with medical standard approved type.



### eNSP-300P series

More than 210,000 units sales record, high reliability ATX Power Supply

## "Nipron Wave" expands your possibility

Details of "significant added-values" -Full of new product information and summarized product features. "Nipron Wave" is issued every 3 months and sent to you for FREE!

### <Contents>

New product info.

"Special Topics" useful for customers

Another point of view of existing models



Feature pages with lots of information



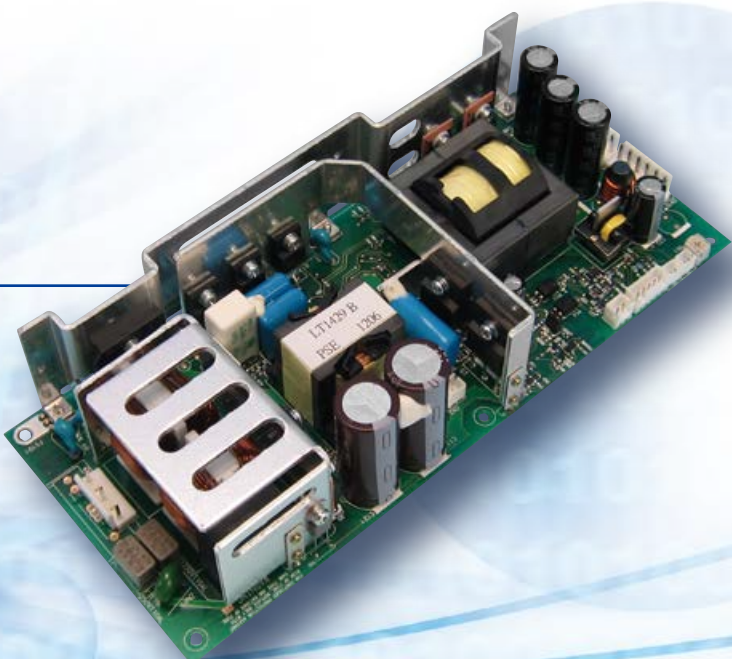
# Nipron's developmental power

Overwhelmingly highly-reliable PSU, Nipron's developmental capability exploded for the producing of "Nonstop PSU".

Releasing original products continuously which defines "It is achieved because it is Nipron".

## OZP-350

By applying most-advanced components and techniques, 95% high efficiency as industry's highest has been achieved for high SPEC board type AC-DC switching mode PSU.  
Addition to meet the spec. of high power/high peak, this PSU can flexibly fulfill customers' needs with various optional functions.



100TBFL-1000 series

## The “100-year” Converter\*

With MPPT control and industry's highest efficiency 98%, this compact DC-DC booster can utilize solar generated power maximally. With Nipron's own multiple voltage boosting circuit, we could EXCLUDE short lifetime components: electrolytic capacitors and cooling fans. Extremely long life time!

\*This is our own nickname. No guarantee for the performance of 100 years continuously.

### Product development with most-advanced components and leading-edge engineering

Nipron positively use most-advanced components and leading-edge engineering. Such as "Silicon carbide schottky diodes" (SiC-SBD) which use silicon carbide (SiC) and expected to be next generation powerful semiconductor material, also "soft switching method" (Half bridge full-wave current resonance method) which both used for our OZP-350 series.

### Reliability Grade

Using our power supplies at customer's for safe and long, we set up 4 levels of reliability grades that specify design standard individually under the operating circumstances at developing stage.

HFA	• • •	Advanced industrial equipment use <b>Design life 10 years or longer*</b> Double-sided through hole PCB (FR-4 Glass Epoxy material)
FA	• • •	General purpose industrial equipment use <b>Design life 7 years or longer*</b> Double-sided through hole PCB (FR-4 Glass Epoxy material)
HOA	• • •	Advanced business machine use <b>Design life 5 years or longer*</b> Single-sided PCB (FR-4 Glass Epoxy material) acceptable
OA	• • •	General purpose business machine use <b>Design life 3 years or longer*</b> Single-sided PCB (FR-1 phenol material) acceptable

\*24 hrs. continuous operation at 25°C

### Product Development Flow

We are developing and releasing the products followed by the processes setting with ISO9001; Design review, Evaluation and Authorization Test, and Marketing Authorization.

### Engineers Training -For Next Generation-

In order to learn design and development skills, and keep developing state-of-art PSUs, we have unique training system for junior engineers.  
To develop sample PSUs with the team of newly hired engineers and junior engineers with 2-3 years experience.  
We believe giving opportunities to develop new design PSUs from the beginning to the end lift up and specialize junior engineers.



Trial PSU developed by junior engineers  
Small size DC-DC Converter



Trial PSU developed by junior engineers  
Single output general purpose PSU



### For Better Technology / Business

To improve and standardize our technology and business better way, we have monthly meeting among 3 R&D groups, purchasing and producing technology.





# Value-creating components

## COMPONENT PROCUREMENT

Keep supplying "Nipron brand" products with right price, we think it is very important to build a relationship of trust with our suppliers. We aim to manufacture attractive products by purchasing not only "components" but also "values" from our suppliers.

### Intensive control of lead-time

To organize prompt delivery for major products (standard products), standard material stock is set by the system based on the production plan and secured for stable production by issuing "unofficial material order" to suppliers. Moreover, the weekly unofficial order information is informed to suppliers to let them know the latest situation for securing the delivery.

### Cost control for "right price"

We procure valuable materials and produce valuable power supplies. We, however, dare not to sell the value (idea) with low price. We are aiming at the blue-chip company that is able to provide "right price and high quality products" required by customers and society.

### Selecting and Evaluating Suppliers

Under the "Win-Win" concept for further growth, we aspire to the business with suppliers with whom we can establish strong and firm relationship. Bringing data from relevant sections on QCD (Quality, Cost and Delivery), we at all times seek superior suppliers through evaluations on each of it.

#### Corporate Strategy Meeting

Corporate Strategy Meeting is held once a year to strengthen the partnership with suppliers tighter. Introducing our philosophy well for better understandings and growing together builds better relationships. With excellent suppliers we carry out the building-up of persistent "Nipron Brand".



### Ensure long-term / stable supply of Nipron PSU

Long-term stable supplying is secured by maintaining the necessary stock and selecting alternative materials in design division prior to discontinued materials.

### Eco-Friendly Sourcing

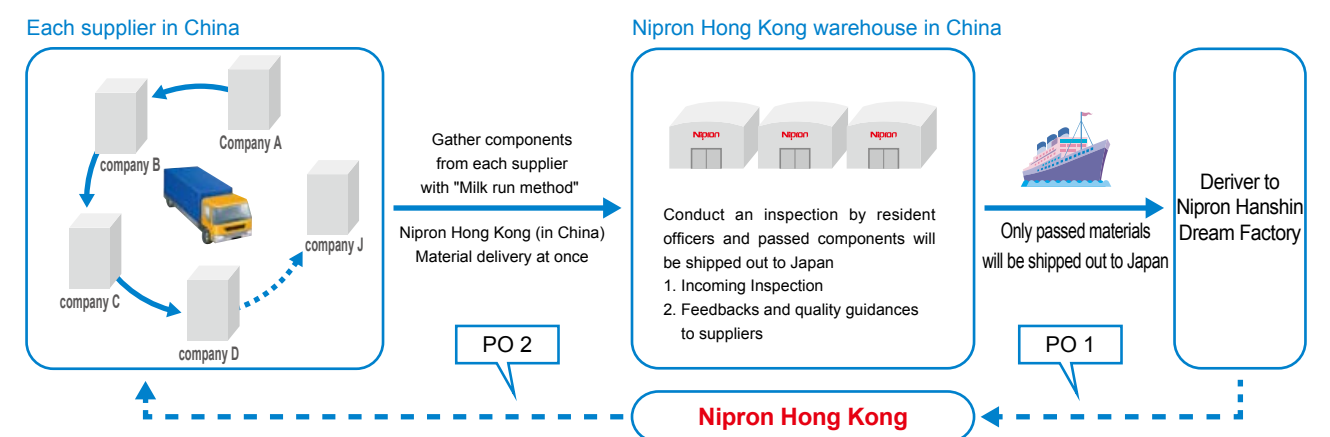
We are working on "Green procurement" aggressively to protect global environment as one of challenges. For supplies who are actively working on environment management, we encourage them to maintain and improve their environment management system, and for suppliers whose efforts are not enough, we cooperate with them to review and support their management system.

#### Customers' Certifications

Canon Inc.	Green Activity
Sony Corporation	Green Partner
Panasonic Electric Works	Pb Free Solder Products of Quality Approval
Mitsubishi Electric	Green Approval
Ricoh Group	Chemical Substances Management System

### Nipron Hong Kong

In order to procure high quality materials at low cost speedy, we established 100% owned subsidiary "Nipron Hong Kong".



#### Advantages of Nipron Hong Kong

##### Quality Improvement of Materials

- Conducting incoming inspections at Nipron Hong Kong warehouse can detect defective components in advance.
- Feedbacks and quality guidances for defective components found at incoming inspections can be given to suppliers ASAP.
- Both parties in China can communicate and handle problems quickly face to face.

##### Cost effective

Total cost reduction achieved considering manufacturing "pushing", "unbalancing" and "wasting".

##### Delivery Advantages (Shorten the lead time)

- Nipron Hong Kong can directly ask, negotiate or push suppliers in China about the lead time.
- Furthermore our tracks will go and pick up materials directly anywhere at any time which enables us to get materials when they are ready to be shipped out.



# Guardian of Reliability

## Not give any "break down easily" products

In order to satisfy customers' demands for PSUs from function, SPEC and reliability perspective we conduct hardest evaluations intensively to release ideal (toughest) PSUs.

### EVALUATION AND TEST

#### ■ Tough test - Power Match-up -

Nipron conducts strict evaluating tests at sample design. This is called Power Match-up. Test items extend beyond the specification in order to find the weak points of the circuit and the mechanism etc. With this test, R&D can improve the weak part and design rugged PSUs. There is clearly different performance between Nipron PSU which passed the Power Match-up and competitors' ones.

ATX Power Supply Match-up Data				
1. Date: Jan. 20, 2006 2. Nipron: ePCSA-500P-X2S 3. Opponents Company A: API3PC53 Company K: KAD550AS SLI				
No.	Match-up Items	Nipron ePCSA-500P-X2S	Company A API3PC53	Company K KAD550AS SLI
1	Input voltage ON/OFF test at high temp.	○	○	○
2	Load ON/OFF test at high temp.	○	×	×
3	Over input voltage test	○	○	○
4	Over load test at high temp.	○	○	○
5	Low input voltage test at high temp.	○	×	○
6	Over temp. test	○	○	×
7	Input impulse test	○	×	×
8	Electrostatic discharge	○	○	×
9	Vibration test	○	○	○
10	Lightning surge test	×	×	×
11	Simplified Radio Frequency Immunity test	○	×	×
12	Multiple random test	—	—	—

#### Power Match-up Tests

- Input frequency fluctuation test
- Load fluctuation test
- Cold start test
- Input voltage over load withstand test
- Input voltage sweep up/down test
- Line noise immunity test
- Electrostatic discharge immunity test
- Lightning Surge test
- Burn in vibration test
- Thermal-shock test
- High temp. current test
- High temp. aging test
- Humidity test
- ON/OFF Test
- Prior OCP current test etc...

#### ■ To have ideal products... Technical / Evaluating Tests

We conduct evaluating tests with hardest condition at product developing stage in order to extract electrical issues and problems. This enables to develop tough PSUs. After that, we conduct a final evaluation for mass production. At this stage, we will conduct more detailed evaluations and can provide high-quality finished PSUs to our customers.

#### Characteristic tests

Electrical Characteristics	EMC Tests	Reliability Tests
Input current	Electrostatic discharge	Vibration test
Input power	Radiated, radio-frequency EM field	Mechanical shock
Power factor	Fast transient burst	Component temp. rise test etc...
Efficiency	Lightning surge	
Cross regulation	Conducted, radio-frequency immunity	
Rising time	Magnetic Field	
Falling time	Unnecessary radiation noise	
Ripple / spike voltage	Input re-entry VCCI test	
OVP	Input dip	
OCP	Short-term input interruption etc..	
Inrush current etc...		

#### Safety Tests

- Leakage current test
- Insulation resistance
- Dielectric strength
- Earth resistance measurement etc...

#### ■ Calibration of evaluation equipments

We have implemented the latest test equipments to conduct thorough tests and respond to customers' requirements quickly. Equipments are calibrated regularly so that we can keep the quality of tests high.

#### ■ Speedy evaluation! 24-hour continuous unattended testing device

To defeat our competitors, we are taking progress to conduct speedy evaluations and developed "automated evaluation machine for 24-hours" Extracting design issues and re-evaluating in short time for many times, in order to fulfill customers' demands, we keep introducing state-of- art evaluating equipment and testing for better product development.



Automatic measuring system for long time



Automatic power measuring device



Thermal shock tester



Automatic electrical characteristic inspection device



# Improve productivity and quality with refined production processes

## PRODUCTION

We are proud of "Made In Japan" quality and believe it flexibly fulfills customer satisfaction.  
Toward world's No.1 quality and delivery we keep upgrading quality control.

### Device Mounting Process

Our surface mounting line is configured with solder printing machine, bond dispenser, high speed mounter, multi-functional implementing machine and reflow furnace. Therefore it can flexibly apply to variety of PCBs. Before machine mounting, we conduct visual check to keep high quality. Also we are moving ahead on mechanization introducing latest radial / axial / odd-shape component inserters to avoid variation by manual assembly and improve our productivity and quality.



Latest radial inserters



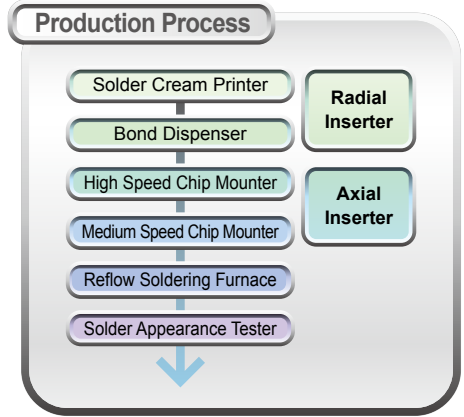
Chip Mounter



Latest axial / odd-shape component inserters



Appearance Testers



### Manual Insertion Process

In this process, bigger components, such as transformers, choke coils and wire harnesses will be mounted. PCBs will be finished after going through solder bath. In order to achieve high productivity even for various models in small quantity, we make progress to eliminate wasting time by digitalizing job orders, and unifying PCB width. Furthermore, we check solder condition for all PCBs by visual check and ICT (inCircuit Tester). For ICT, we introduced both pin board type and fixtureless type. For putting components and cooling fins, we introduced parallel link robots to reduce man-hour and improve productivity.



Robot Assembly Process



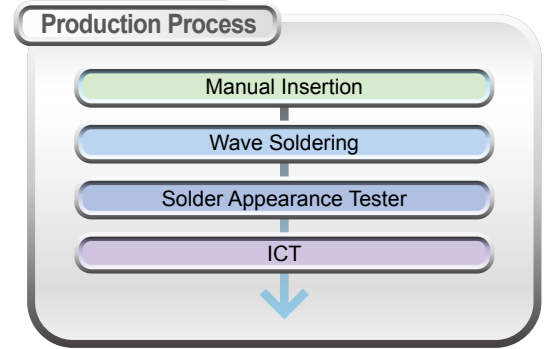
Manual Insertion Process



Appearance Inspection Process



Fixtureless ICT Process

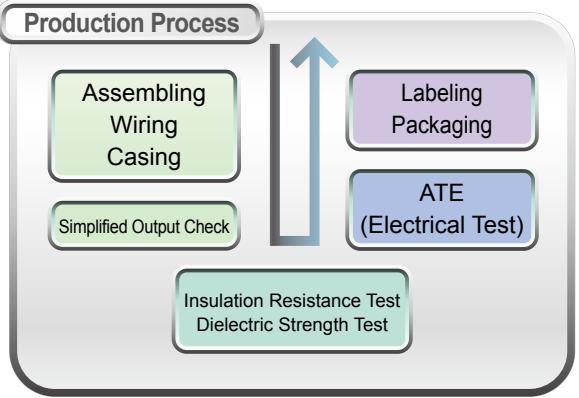


### Assembly and Inspection Process

We assembly PCBs and conduct a final inspection. There are several lines for this process such as "cell-lines" and "large capacity PSU lines". Our own designed controlling system, "Digital-cell line", is introduced at our cell lines. This system can detect the products, skipped the processes and keep track of product producing. Increasing productivity and quality and reducing man-hour control by covering digitalization of job orders, andon function, process tracing and visualization process progress.

## Digi Cell

Nipron Digital Cell-line System



Final inspection process



Cell line



Cell line



Large capacity PSU line



# Sales structure to build "Win-Win" relationship with our customers

Sales reps - who are required to have sensitivity and most close position to company management.  
It would not be an overstatement to say that strong corporate enterprise power = sales capabilities.  
For customer satisfaction, we have supportive structure.



## Salesman development

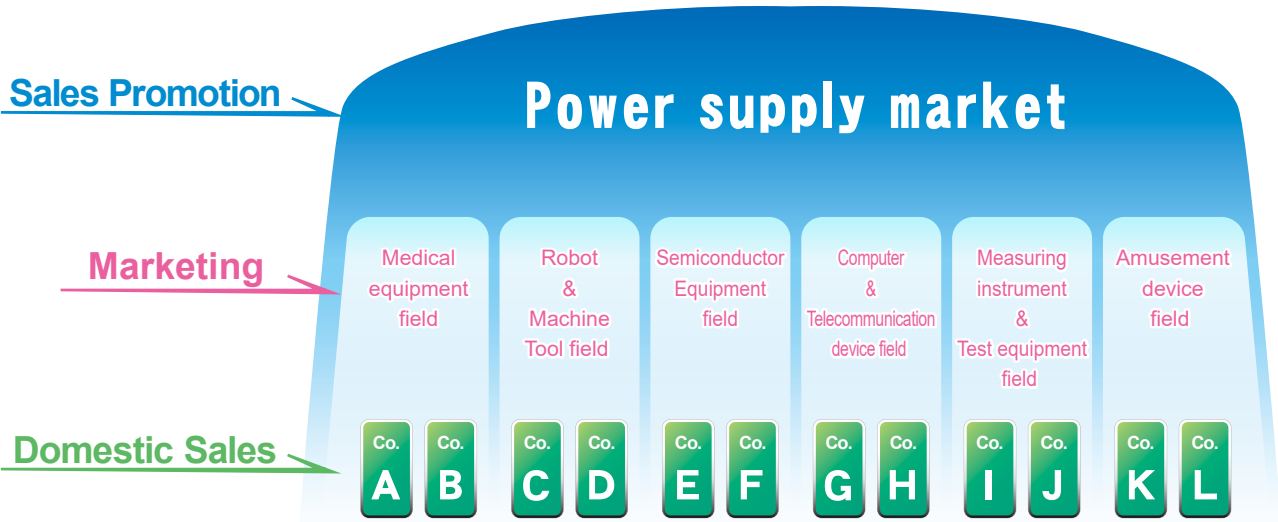
Since we have variety of standard products, we train sales people having product studied from actual business meeting, products seminar, and role-playings due to enable to respond to customers' requests quickly through these studies.

## Company-wide sales meetings

Currently, we realize that it is difficult to increase our sales number by approaching and giving proposals of our products to customers from sales people who directly deal with. Therefore, we have a company-wide sales meeting in a month. Confirming the business situations and progress of each group toward their goals and how to increase service quality to our customers.

## Nipron's unique "3 Sales" structure

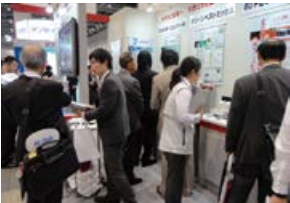
Sales structure is divided into three sections to clearly specify the activities in each section.



### Sales Promotion

Conduct wide range of sales promoting

This section conducts sales promotional activities with advertisings, exhibitions and catalogs to a large indefinite number of customers. Also conducts market research and actualize customers.

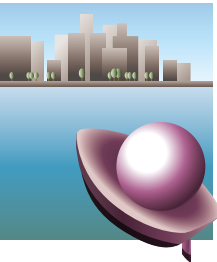


Exhibitions

### Marketing

Develop market and new customers

This section manages sales information, analyze market and make plans for strategies. Also demonstrates sample PSUs and gives private exhibitions.

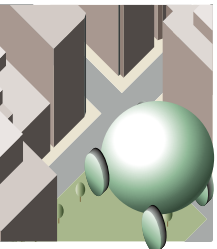


Private exhibitions

### Domestic Sales

Visit customers and have a face-to-face meetings.

Our sales people visit customers directly and have a face-to-face business meetings. Solve customers' problems and provide better service, we build close and trustworthy relationship with customers.



Gen-san Car

### Global sales group

We receive inquiries from customers not only domestic but also all over the world for unique products such as Nonstop PSUs and Tajubu, DC-DC booster. You can directly contact global sales group in Japan or local agencies.





# Nipron Home page Introduction

## www.nipron.com



Website  
www.nipron.com



We've received special favor on our industrial use power supplies. This time we are reborn into new sales system to introduce high reliability power supply, Nipron' pride, to many customers jumping out of the range of industrial use power supplies. In this system, any customer has easy access to our products.

However, PC embedded power supply is not visible to many people and it makes it difficult for them to understand. For those who are not familiar with power supply, we have prepared our Home Page to let them easily understand the power supply and diffuse the knowledge of it.

We would like you to know of Nipron's persistency, belief, willing spirit, and sincere heart.

To tell our heart on Nipron' power supply to many people, we bring in our lot of "let-you-know" feeling on our Home Page.

■ Your Favorite power supply is on the Internet Shopping.

### ●Stocks

Updated on a daily basis

### ●Output Specification

Output power, Peak power and other specification are described in detail.

### ●Output Connector

With single click on icon, individual icon is described on the screen.

### ●To ask about this product

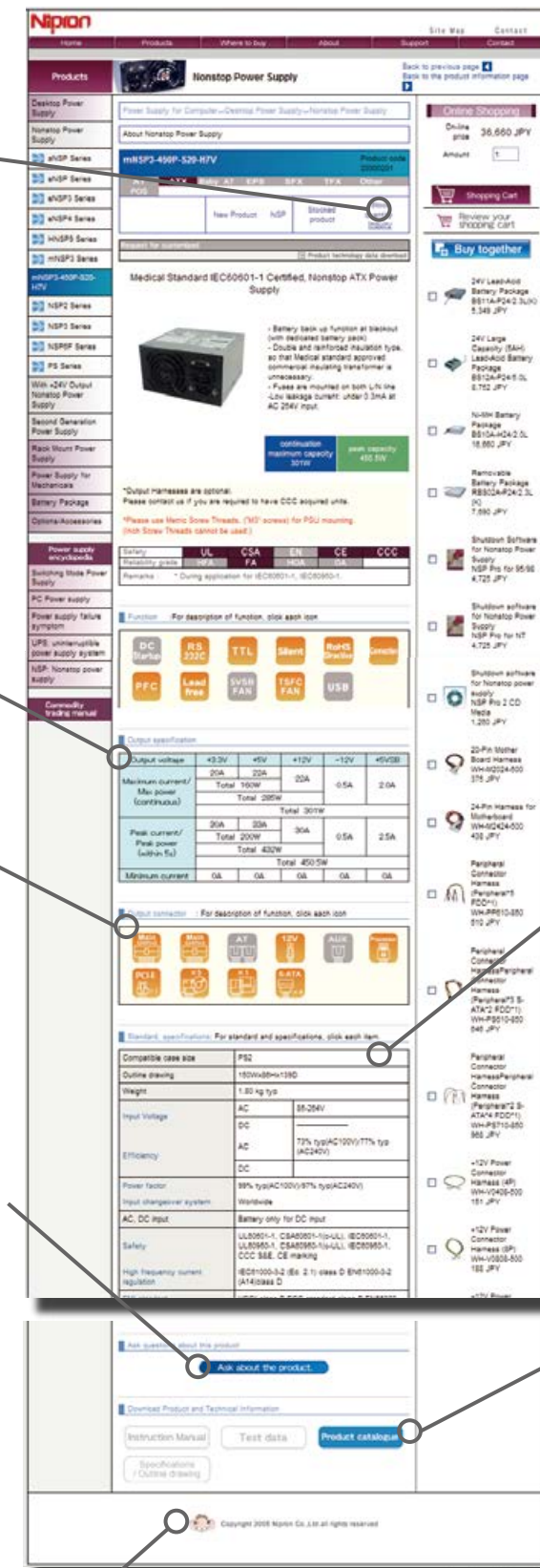
When you want to ask about the product, write down your questions in the Form and send to us.

### ●Standard and Specification

Product standard /Specification is described. In addition, Technical terms such as Power Factor, EMI, Standard, show up individually by single click. Even you buy for the first time, you do not have to worry about selection.

### ● Technical documents

Instruction manual, Test data, Product catalog are available. You can review them carefully.



"Gen-san" is an evolved gorilla not only strong but also intelligent. Represents Nipron's ideal product philosophy "Powerful and tough" which comes from high reliability. You can find Gen-san in our web site and catalogs!



## Long-term Supply

We believe that it is very important to keep supplying products for a long.  
We pay much effort to keep long-term supply at least 10 years after it is released.



## Analysis / Repair

We have built up every information of products as we have been developing and manufacturing products by ourselves.  
That is why we could achieve quick response for customers such as failure analysis in a short period of time.

- Quick response (First answer within two weeks)
- Courteous response (Every inquiry will be considered and empathically solved from customers' standpoints.)
- Reliable response (Every inquiry is supported to the last.)
- Our repair support is available for seven years after discontinuance of the products.
- Each sales department at East Japan and West Japan has its CS section to respond quickly, courteously, and reliably.

Please contact us through our web site, "Inquiry about our products".  
<http://www.nipron.com/consultation/product.cgi>



## Technical Support

### Power supply encyclopedia

"Power supply encyclopedia" is uploaded on our Website.  
It clearly describes unknown points about power supplies.  
[http://www.nipron.com/product\\_info/search\\_power\\_cyclopedia1.html](http://www.nipron.com/product_info/search_power_cyclopedia1.html)

### FAQs

FAQ (Frequently asked questions) are uploaded on our Website.  
<http://www.nipron.com/consultation/qa-index.cgi>

### Inquiry about our products

For more detail information about products, please contact us through our web site, "Inquiry about our products".  
<http://www.nipron.com/consultation/product.cgi>



## Environmental Support

### Recycling

We are happy to recycle batteries which you purchased from us for the purpose of environment preservation.  
Please contact us for details.

### Inquiry about environmental quality

We have been producing products compliant with RoHS Directives since 2003,  
and now we have realized many products in compliance with environment.  
We quickly respond to inquiries on our environmental activities and product compliance with environment.  
Please contact us for details.



Dropper type DC stabilized power supply "CV series"



New type Dropper power supply "NCV-ECV series"



Company relocation:  
2-chome 19-20 Kaneden-cho, Suita-shi



Standard Switching Mode PSU "NSA series" (30 models)



V1-V2 series



DD series



Cim giken Co., Ltd. established



Matsusaka Dream Factory



2nd Matsusaka Dream Factory



"Best Mix" -high efficiency DC power supply



150/250/375 (3 models) of NSP2 series



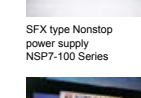
Highly reliable, silent power supply PCSA-300P-X2S



Nonstop power supply for Compact PCI cNSP-250-D2S



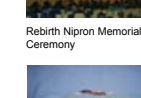
SFX type Nonstop power supply NSP7-100 Series



Battery life checking function included Nonstop Power supply SNSP-300P-3D2S



Removable harnesses Nonstop Power Supply eNSP-300P series



Redundant Power Supply PCSR-300-X2H



30th Company-Wide Sales Meeting



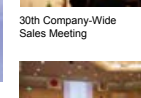
High Efficiency 1U Power Supply PC1U-210P



1st Procurement Policy Explanatory Meeting



Expanded Automatic Chip Insertion line



1st TQM Presentation Meeting



Hanshin Dream Factory constructed



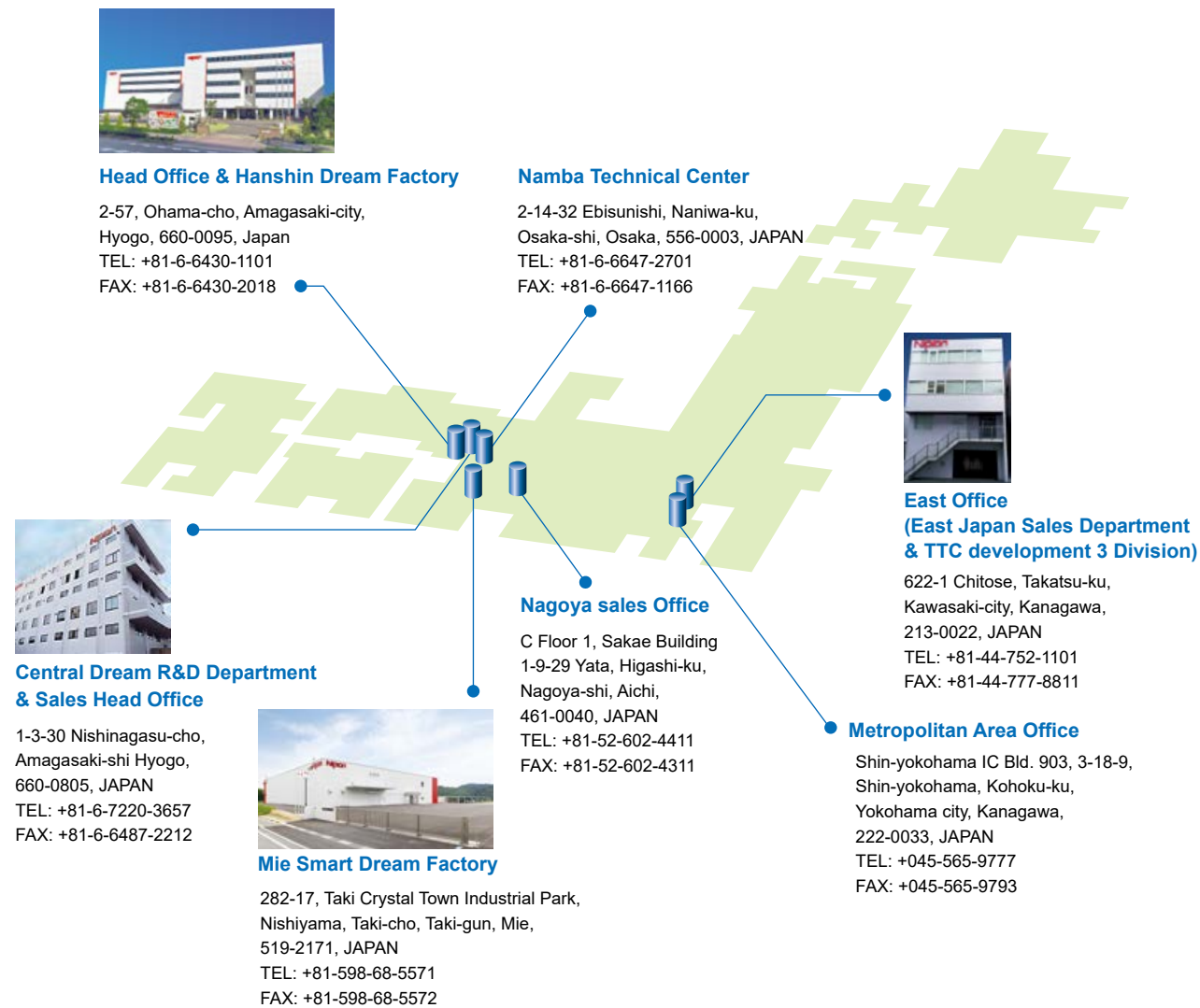
East Office established

1957	Sakai Dengi Shokai in Tenjinbashi 6-chome established
1968	Renamed to "Nihon Protector."
1970	"Nihon Protector Co., Ltd." incorporated with capital of 1million yen. Relocated to Tonouchi Factory in Amagasaki-shi.
1972	Factory relocated to Niitaka 2-chome 10, Yodogawa-ku, Osaka-shi.
1974	Developed and released New-type dropper power supply "NCV · ECV series"
1976	"Nihon Protector Sales Co., Ltd." established with capital of 5.5 million yen.
1981	"Nihon Protector Co., Ltd." established with capital of 10 million yen. Relocated to Minamikonden-cho 2-chome 19-20, Suita-shi.
1984	Capital increased to 20 million yen Switching power supply for Limit Robot use received an award from Osaka high-tech industry promotion fund.
1985	Hanshin Dream Factory expanded
1986	Capital increased to 30 million yen
1988	Electrical Appliance and Material Control Law Class A appliance granted. Nipron received the Contribution prize from Mitsubishi Electric Corporation Kyoto Works.
1989	Capital increase to 40 million yen. "Cim giken Co., Ltd." established with capital 5 million yen from "Nihon Protector Co., Ltd." as a sheet-metal processing division
1990	Capital increased to 50 million yen Received an award from Tokoseiki Ltd Received an award from Shinko Electric Co., Ltd Matsusaka Dream Factory constructed and started with Automatic insertion machines in Taki-gun, Mie-prefecture Customized Power Supply acquired UL, CSA and TUV standards
1991	Capital increased to 70 million yen
1992	Capital increased to 90 million yen Received special award from Osaka prefecture for one of excellent companies of quality promotion
1994	Received Frontier Industry Finance from Osaka prefecture Industry approval on the excellence of in-car ultra compact quick charger for electric vehicle use Selected to "Takugin Frontier outstanding performance award" of Hokkaido Takusyoku Bank Project.
1995	Capital increased to 119 million yen Took an U.S. Patent on Switching Regulator with Voltage Chopping Circuit
1996	Capital increased to 164 million yen Hanshin Dream Factory constructed and started in Amagasaki-city, headquarters functions moved Nonstop Power Supply received an award for excellence at Venture Expo Osaka Received a debt guarantee as an authorized company based on Specified New Business Law of Ministry of International Trade and Industry, for the excellence of Nonstop Power Supply Received a debt guarantee from Osaka Research and Development Enterprise Promotion Foundation Developed and released IBM compatible PC power supply "PCS series" and Nonstop power supply "NSP2 series"
1997	Nonstop power supply received NBK Grand Prize of The New Business Conference Kansai Capital increased to 201.5 million yen The excellence of Nonstop power supply approved the Temporary Measures Article 4, Paragraph 3 of creative business promotion for small-and-mid sized business from Osaka prefecture Took an U.S. Patent on Nonstop Regulator
1998	2nd Matsusaka Dream Factory constructed and started in Taki-gun, Mie prefecture Auto Chip component inserter lines introduced
1999	All business establishments acquired ISO9001
2001	Renamed to "Nipron Co., Ltd." The excellence of Nonstop power supply approved the plan to change as standard goods manufacture based on Temporary Measures Article 4, Paragraph 3 of creative business promotion for small-and-mid sized business from Osaka prefecture Approved an Excellent Manufacturing Company in Hanshin Region and authorized as Hanshin Monozukuri Leading Company Capital increased to 336.75 million yen Transferred of business from Nidec Potrans Corp.
2002	Develop and released "eNSP-300P" series The world's first removable harnesses Nonstop power supply
2003	30th Company-Wide Sales Meeting held in Toba inviting our suppliers Authorized as "Green Partner" by Sony Corporation.
2004	Acquired environmental management system ISO14001 Implemented TV conference system to build company-wide VPN network 1st Procurement Policy Explanatory Meeting held in Amagasaki inviting our suppliers
2005	2nd Procurement Policy Explanatory Meeting held in Amagasaki inviting our suppliers Develop and released absolute silent ATX power supply "Fanless Power Supply" As Nipron's first "Mina-Motto san" series released a PC power supply with three 12V-outputs which is available at PC shops
2006	1st TQM Presentation Meeting Stock Exchange Listing Project kicked off. With review of the business between groups, "Nipron MDF" business unified to "Nipron Co., Ltd"
2007	3rd Procurement Policy Explanatory Meeting held in Amagasaki inviting our suppliers
2008	Hanshin Dream Factory constructed and started in Amagasaki-city, headquarters functions moved Hanshin Dream Factory reception "40 years of history and toward bright century"
2009	Nipron Co., Ltd 100% subsidiary Nipron Hong Kong established
2011	Central Dream R&D Department & Sales Head Office renovation. Visitors meeting rooms / employee training room upgraded and expanded Introduced "Parallel link robots" into Hanshin Dream Factory. Semi-automated part of assembly process
2012	Online shop "Soku-nou shop" opened East office moved from Fuchu-city Tokyo to Kawasaki-city Kanagawa
2013	Capital increased to 436.75 million yen

## Company Profile

Company name	Nipron Co.,Ltd.
Head office	2-57, Ohama-cho, Amagasaki-city, Hyogo, 660-0095, Japan.
Establishment	July 1981 (Initiation: 1970)
Capital	JPY 530,660 Thousand
Business lineup	Develop, manufacture and sell Switch-mode Power Supplies and Nonstop DC Power Supplies
Representative	Tatsuya Futami
Headcount	441 *July 2023

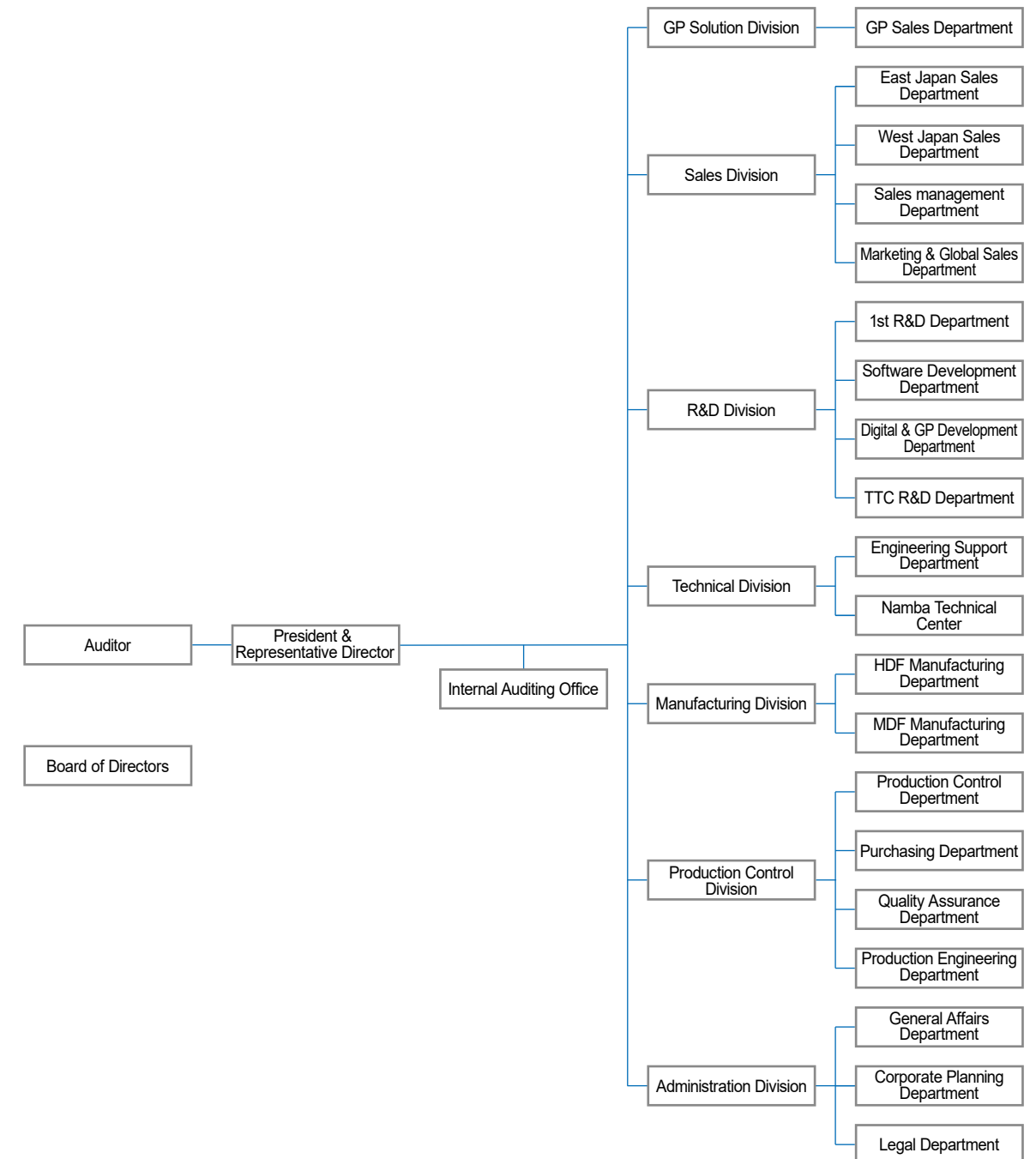
## Locations of offices



## Affiliate companies

<b>Nihon Protector Sales Co., Ltd. (Holdings company)</b> 1-3-30 Nishinagasu-cho, Amagasaki city, Hyogo, 660-0805, JAPAN	<b>Cim Giken Co., Ltd. (Sheet Metal Processing)</b> 2-57 Ohama-cho, Amagasaki city, Hyogo, 660-0095, JAPAN TEL: +81-(0)6-6430-1101 FAX: +81-(0)6-6430-2018
-----------------------------------------------------------------------------------------------------------------------------	---------------------------------------------------------------------------------------------------------------------------------------------------------------------

## Organization



## Certifications

### ISO9000 series

Approved	ISO9001
Month / Year	Jan. 1999
Certification Agency	Moody International Certification Ltd.
Registration No.	08144-03

### ISO14000 series

Approved	ISO14001
Month / Year	Feb. 2004
Certification Agency	Moody International Certification Ltd.
Registration No.	08145

### Certifications from Customers

Sony Corporation	Green Partner	Panasonic Electric Works Co., Ltd.	Pb Free Solder Products of Quality Approval
RICOH Company, Ltd.	Chemical Substances Management System	Mitsubishi Electric Corporation	Green Approval
Canon Inc.	Green Activity		





[www.nipron.com](http://www.nipron.com)



**Nipron Co., Ltd.**

**Head office and Hanshin Dream Factory**

2-57, Ohama-cho, Amagasaki-city, Hyogo, 660-0095, Japan.  
TEL: +81-6-6430-1101 FAX: +81-6-6430-2018

**Sales and R&D department**

1-3-30, Nishinagasu-cho, Amagasaki-city, Hyogo, 660-0805, Japan.  
TEL: +81-6-7220-3657 FAX: +81-6-6487-2212

**East office**

622-1 Chitose, Takatsu-ku, Kawasaki-city, Kanagawa, 213-0022, Japan  
TEL: +81-44-752-1101 FAX: +81-44-777-8811